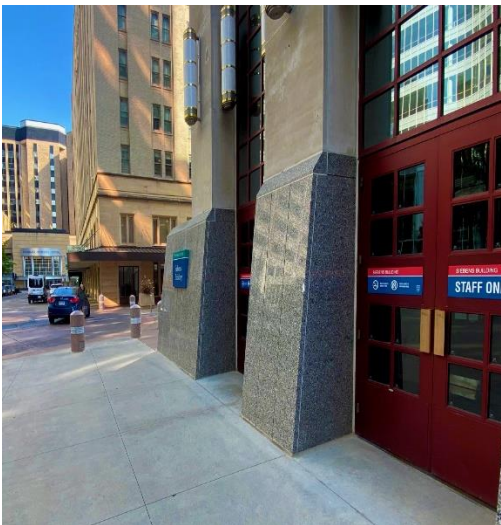




# Mayo Clinic Alix School of Medicine 50<sup>th</sup> Anniversary Weekend

## EVENT DETAILS

We are thrilled that you will be joining us on September 29 and September 30, 2023, to celebrate 50 years. Below you will find additional details and reminders about each event. If you have any additional questions, please email [mcevents@mayo.edu](mailto:mcevents@mayo.edu).



### Fri., Sept. 29 | 6:00–10:00 p.m. | Reception, Dinner & Dancing

#### Where is the event?

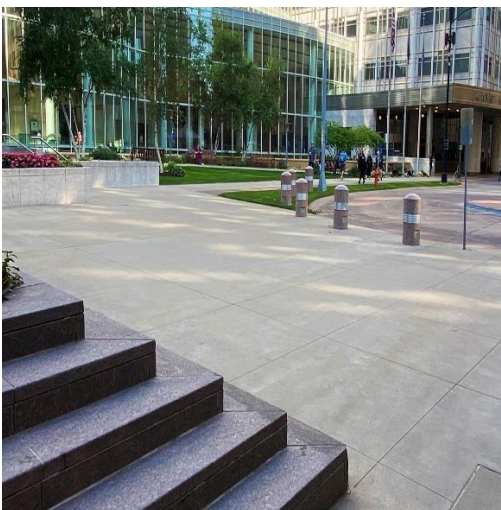
The event will be in **Phillips Hall**, located in the **Siebens Building**. You can enter the building through the doors shown in the photo on the left. These doors are adjacent to the historic Plummer brass doors, and they face the Gonda/Mayo Buildings. Once you are in the building, you will see Phillips Hall immediately in front of you.

#### What is the dress code?

We recommend **semiformal attire**.

#### What time should I arrive?

We will begin with cocktails and mingling starting at **6:00 p.m.** At **7:00 p.m.**, you will be seated for dinner. After dinner, there will be a short program, followed by dancing and music from the band Incognito.



### Saturday, Sept. 30 | 8:00–10:15 a.m. | Tours

#### Where is the event?

Please meet at **Annenberg Plaza** by the **drop-off circle**, pictured on the left. We will have shuttles to take you to the Simulation Center in the Stabile Building and the Procedural Skills Mastery Lab at St. Marys Hospital. After the tours, the shuttles will drop you back at the Mitchell Student Center (if you are also attending the panels) or back at the Annenberg Plaza.

#### What is the dress code?

We recommend **casual** or **business casual attire**.

#### What time should I arrive?

Please plan to arrive at **by 8:00 a.m.** The shuttles will leave promptly at **8:00 a.m.**



## Saturday, Sept. 30 | 10:00 a.m.—12:30 p.m. | Panels

### Where is the event?

The event will be in the Mitchell Student Center Great Hall, located on 2<sup>nd</sup> Street, across from the Mayo Building. Please enter through the 2<sup>nd</sup> street entrance, pictured to the left.

### What is the dress code?

We recommend casual or business casual attire.

### What time should I arrive?

We will have light refreshments available from 10:00—10:30 a.m. The first panel will begin at 10:30 a.m.

## General Event Questions

### Do I need to register for all three events?

Yes, advance registration is required for all three events. If you are unsure which events you registered for, please feel free to contact [mcevents@mayo.edu](mailto:mcevents@mayo.edu), and we will be happy to confirm.

### Where can I park for each event?

Parking in the Mayo Clinic Damon Ramp (15 3<sup>rd</sup> Ave. SW) is available after 5:00 p.m. and on the weekends. Simply enter the ramp, take a ticket, and on your way out, use the exit that has its arm up. There will be no charge.

You can also park in the city ramps, which are free after 5:00 p.m. and on weekends. Ramps convenient to the event locations are the 3<sup>rd</sup> Street Parking Ramp (100 3<sup>rd</sup> St. SW) or the Center Street Ramp (11 W. Center St.). As a reminder, you can also use metered street parking if available, as it is also free after 5:00 p.m. and on the weekends.

### Will there be a photographer at the anniversary events?

We will have photographers at all three anniversary events. Following the event, we will share photos with attendees.

### How can I shop at the Alumni Association store?

The Alumni Association's store will be open on Friday, September 29, until 5:00 p.m. The store is located on the 7<sup>th</sup> floor of the Siebens Building. As a reminder, you can always shop online by clicking [here](#).

### Who can I contact with questions specific to the 50<sup>th</sup> Anniversary events?

Please email [mcevents@mayo.edu](mailto:mcevents@mayo.edu) with any questions. This email will be monitored before, during and after all events.

### Where can I find information about the Alumni Association's Biennial Meeting, and who can I contact with Biennial Meeting-related questions?

Please click [here](#) to find more information about the Biennial Meeting activities. For questions about the Biennial Meeting, please contact [mayoalumni@mayo.edu](mailto:mayoalumni@mayo.edu).

# We look forward to celebrating with you next week!